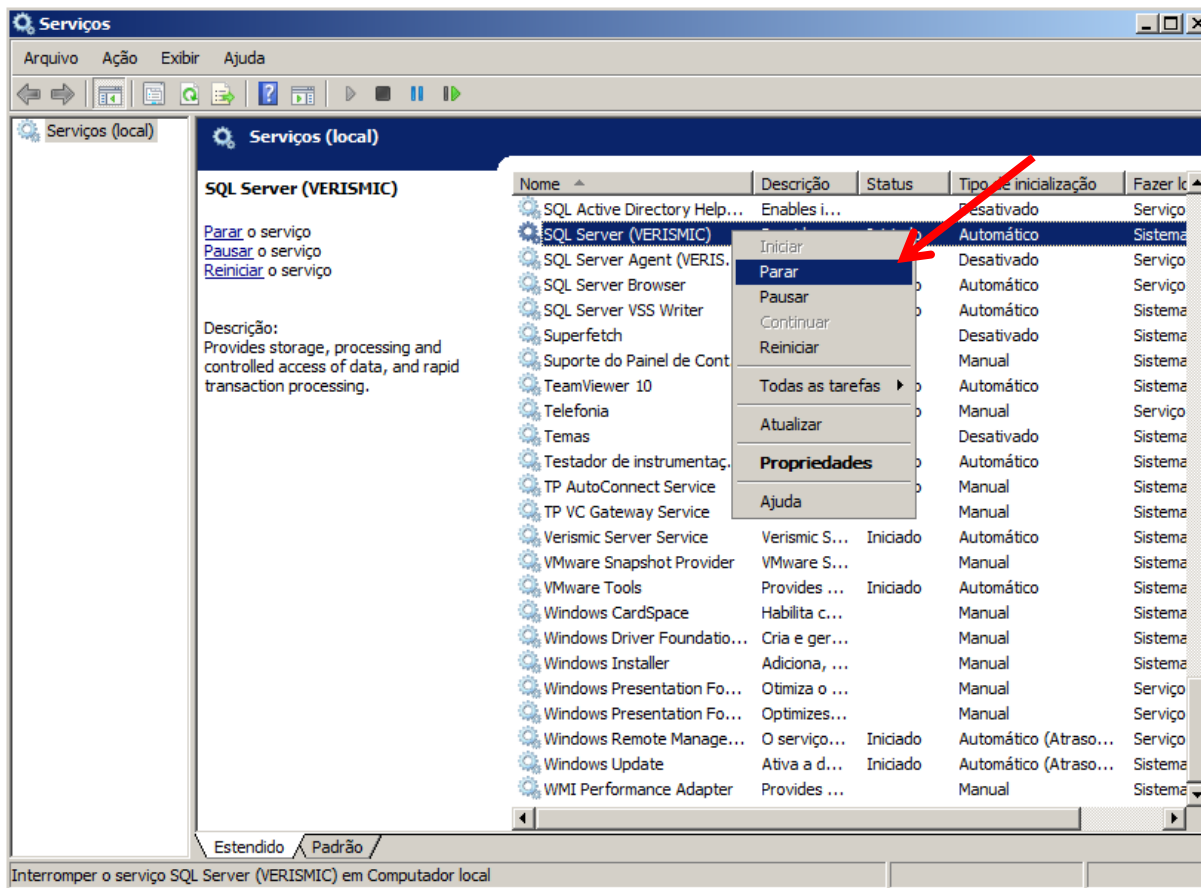


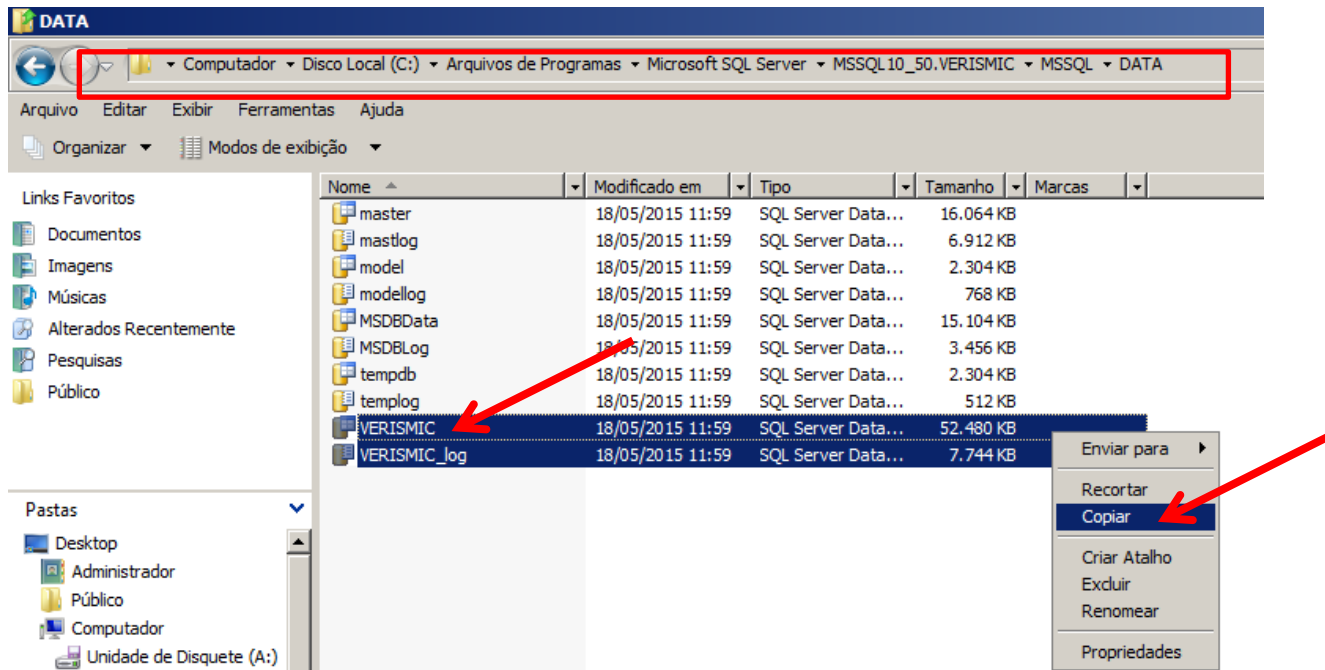
Passo-a-passo

Cópia do Banco de dados
Verismic Power Manager

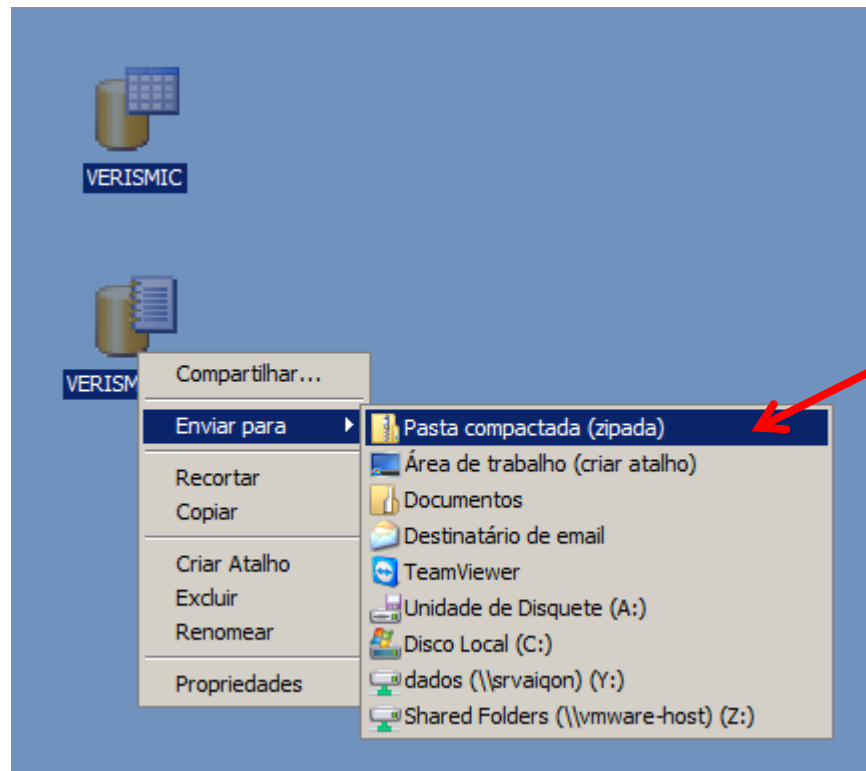
1- Parar o serviço do SQL (SQL Server (VERISMIC))



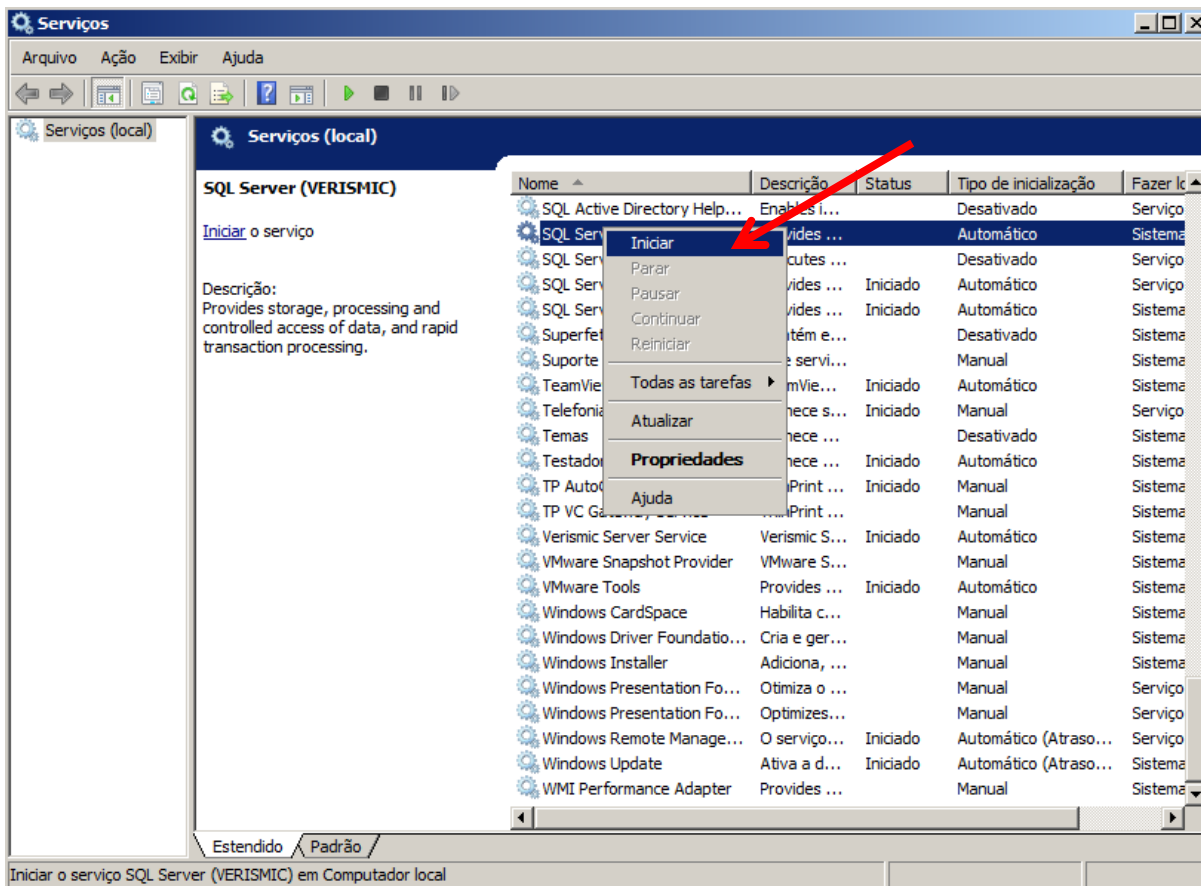
2- Dentro da pasta: "C:\Program Files\Microsoft SQL Server\MSSQL10_50.VERISMIC\MSSQL\DATA" , copiar os arquivos: VERISMIC e VERISMIC_log para uma outra pasta (Ex: Desktop)



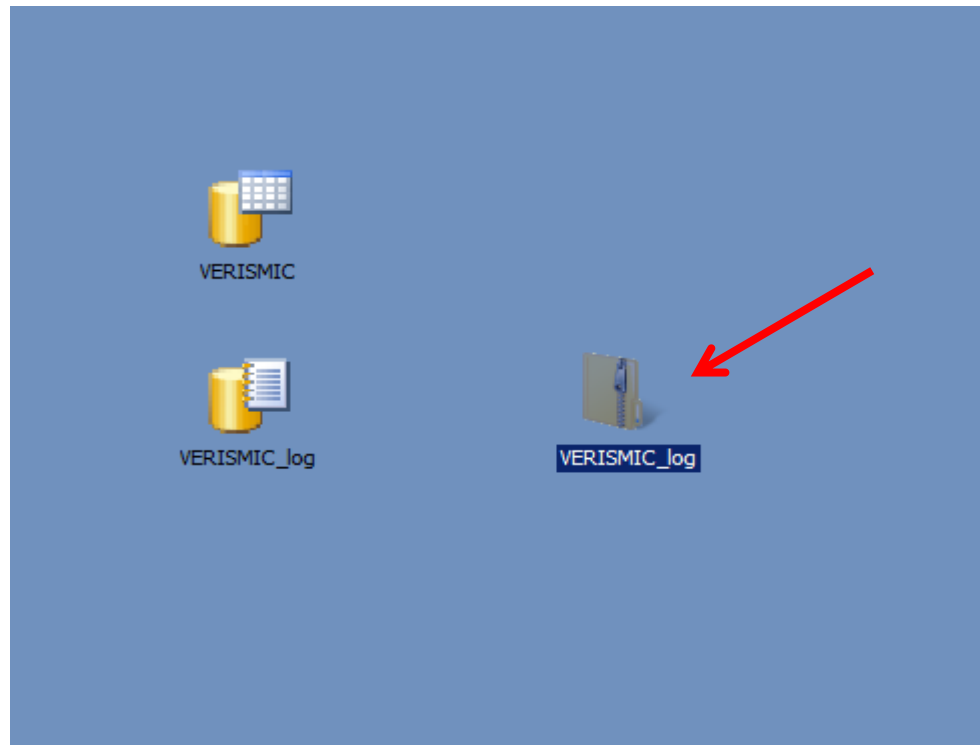
3- Compactar os arquivos VERISMIC e VERISMIC_log



4- Reiniciar o serviço do SQL (SQL Server (VERISMIC)).



5- Enviar a pasta compactada.



Equipe AIQON.